



## Yum Yum Lapo Ciatti, 2020

**IT** Collezione di sedute imbottite dalla forma irregolare con schienale in legno massello di frassino sbiancato curvato.

Seduta con rivestimento sfoderabile in tessuto o pelle, corredato da una pratica tasca. Tre misure: poltroncina singola, poltroncina extra large con spazio che può fungere da piano di appoggio, divanetto a due posti.

**Rivestimenti seduta:** varie tipologie di tessuto e pelle. Tessuto cliente.

**Accessori:** rivestimento schienale in tessuto coordinato.

**FR** Collection d'assises rembourrées de forme irrégulière avec dossier en bois de frêne massif blanchi. Assise avec housse amovible en tissu ou en cuir, équipée d'une poche pratique.

Trois tailles : fauteuil simple, fauteuil extra large avec un espace pouvant servir de surface d'appui, canapé deux places.

**Revêtements assise :** divers types de tissus et de cuir. Tissu du client.

**Accessoires :** revêtement dossier en tissu assorti.

**EN** Padded seating collection inspired by asymmetrical design with backrest in solid curved bleached ash wood. Seat with removable fabric or leather upholstery, equipped with a functional pocket.

Three sizes: single armchair, extra-large armchair with a space that can act as a working surface, and two-seater sofa.

**Seat upholsteries:** various types of fabric and leather. Customer fabric.

**Accessories:** backrest upholstery matching the seat.

**DE** Kollektion mit Polstermöbeln mit unregelmäßiger Form und Rückenlehne aus massivem gebleichtem Eschenholz. Die Sitzfläche mit abziehbarem Stoff- oder Lederbezug verfügt über eine praktische Tasche. Erhältlich in drei Größen:

Einsitzer-Sessel, Sessel Extra Large mit zusätzlichem Platz, der als Ablage verwendet werden kann, und Zweisitzer-Sofa.

**Bezüge:** verschiedene Arten von Stoff und Leder. Kundenstoff.

**Zubehör:** Bezug für die Rückenlehne im gleichen Stoff.



### Finiture schienale / Backrest finishes / Finitions du dossier / Rückenlehne Ausführungen



**Frassino sbiancato**  
Bleached ash  
Frêne blanchi  
Gebleichtes Eschenholz

### Rivestimenti seduta / Seat upholsteries / Revêtements assise / Bezüge Sitzfläche

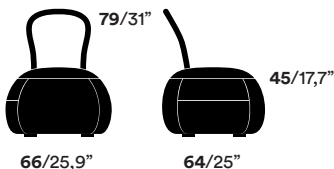
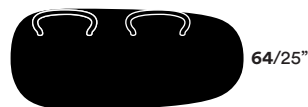
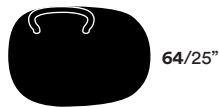


\* ad eccezione della pelliccia ecologica

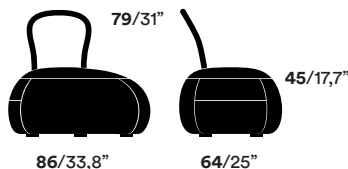
\* except for faux fur

\* sauf pour fourrure écologique

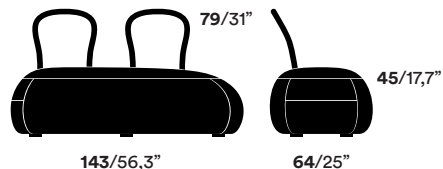
\* außer Kunstpelz



POUF 66

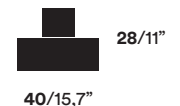


POUF 86



SOFA

### ACCESSORIES



BACKREST COVER

### NOTE

Il nabuk ecologico è un tipo di pelle ricavato dagli scarti rigenerati provenienti dai processi di lavorazione dell'industria conciaria.

Eco nubuck is a type of leather made from regenerated scraps and fibres from leather tanning processes.

Le nubuck écologique est un type de cuir fabriqué à partir de déchets régénérés provenant du façonnage du cuir.

Öko-Nubukleder ist ein Ledertyp, das aus regenerierten Verschnittresten hergestellt wird, die aus der Lederverarbeitung stammen.



Pelle vintage, col. Grigio chiaro 07  
Vintage leather, col. Light grey 07



Pelle vintage, col. Carbone 29  
Vintage leather, col. Carbon 29



Accessorio per rivestimento schienale  
Backrest covering accessory

OPINION CIATTI®  
FIRENZE



# CATEGORIA A / CATEGORY A

## • NABUK ECOLOGICO / ECO-NUBUCK

**COMPOSIZIONE / COMPOSITION**  
100% polyester

**CARATTERISTICHE / CHARACTERISTICS**  
Ecosostenibile / Eco-friendly

**DURABILITÀ / DURABILITY**  
200.000 Martindale



**Bianco 01**  
White 01



**Écru 03**  
Écru 03



**Marrone 25**  
Brown 25



**Grigio chiaro 07**  
Light grey 07



**Grigio scuro 11**  
Dark grey 11



**Nero 15**  
Black 15



**Verde 21**  
Green 21



**Rosso 19**  
Red 19



**A preventivo**  
Upon request

## • MISTO LINO / COTTON-LINEN BLEND FABRIC

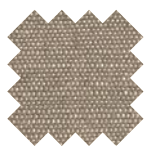
**COMPOSIZIONE / COMPOSITION**  
50% recycled co, 32% vis, 18% linen

**CARATTERISTICHE / CHARACTERISTICS**  
Effetto naturale / Natural effect

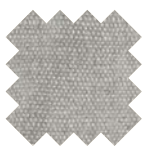
**DURABILITÀ / DURABILITY**  
50.000 Martindale



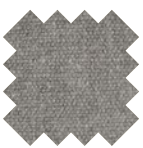
**Bianco 01**  
White 01



**Écru 03**  
Écru 03



**Grigio chiaro 07**  
Light grey 07



**Grigio medio 09**  
Medium grey 09



**Grigio scuro 11**  
Dark grey 11



**Ruggine 35**  
Rust 35



**A preventivo**  
Upon request

## • PELLE SINTETICA VINTAGE / VINTAGE SYNTHETIC LEATHER

**COMPOSIZIONE / COMPOSITION**  
80% pvc, 18% pes, 2% pu

**CARATTERISTICHE / CHARACTERISTICS**  
Effetto invecchiato / Distressed vintage effect

**DURABILITÀ / DURABILITY**  
50.000 Martindale



**Bianco 01**  
White 01



**Grigio chiaro 07**  
Light grey 07



**Marrone 25**  
Brown 25



**Verde 21**  
Green 21



**Nero 15**  
Black 15



**A preventivo**  
Upon request

## • PELLE SINTETICA / SYNTHETIC LEATHER

**COMPOSIZIONE / COMPOSITION**  
72% pvc, 25% cot, 3% pu

**CARATTERISTICHE / CHARACTERISTICS**  
Idrorepellente, antibatterico / Water repellent, antibacterial

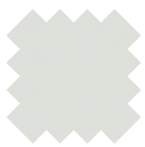
**DURABILITÀ / DURABILITY**  
100.000 Martindale



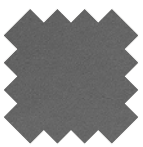
**Bianco 01**  
White 01



**Écru 03**  
Écru 03



**Grigio chiaro 07**  
Light grey 07



**Grigio scuro 11**  
Dark grey 11



**Marrone 25**  
Brown 25



**Rosso 19**  
Red 19



**Nero 15**  
Black 15



**A preventivo**  
Upon request



# CATEGORIA B / CATEGORY B

## • REMIX 3

COMPOSIZIONE / COMPOSITION  
90% new wool worsted, 10% nylon

CARATTERISTICHE / CHARACTERISTICS  
Ecosostenibile / Eco-friendly

DURABILITÀ / DURABILITY  
100.000 Martindale



Panna 05  
Cream 05



Ècru 03  
Ècru 03



Grigio medio 09  
Medium grey 09



Marrone 25  
Brown 25



Verde 21  
Green 21



Rosso 19  
Red 19



Ruggine 35  
Rust 35



Nero 15  
Black 15



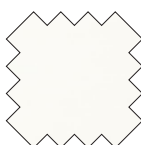
A preventivo  
Upon request

## • TESSUTO TECNICO / TECHNICAL FABRIC

COMPOSIZIONE / COMPOSITION  
80% PA, 20% Elastane

CARATTERISTICHE / CHARACTERISTICS  
Bielastico / Bi-elastic

DURABILITÀ / DURABILITY  
50.000 Martindale



Bianco 01  
White 01



Grigio medio 09  
Medium grey 09



Grigio scuro 11  
Dark grey 11



Fango 23  
Mud 23



Marrone 25  
Brown 25



Rosso 19  
Red 19



Nero 15  
Black 15



A preventivo  
Upon request

## • VELLUTO / VELVET

COMPOSIZIONE / COMPOSITION  
100% cotton

CARATTERISTICHE / CHARACTERISTICS  
Idrorepellente / Water repellent

DURABILITÀ / DURABILITY  
100.000 Martindale



Bianco 01  
White 01



Ècru 03  
Ècru 03



Grigio chiaro 07  
Light grey 07



Grigio medio 09  
Medium grey 09



Marrone 25  
Brown 25



Verde 21  
Green 21



Rosso 19  
Red 19



Nero 15  
Black 15



A preventivo  
Upon request

## • REVIVE 1

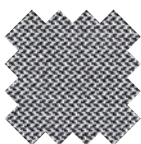
COMPOSIZIONE / COMPOSITION  
100% recycled polyester FR

CARATTERISTICHE / CHARACTERISTICS  
Ecosostenibile / Eco-friendly

DURABILITÀ / DURABILITY  
60.000 Martindale



Ècru 03  
Ècru 03



Grigio medio 09  
Medium grey 09



Marrone 25  
Brown 25



Rosso 19  
Red 19



Nero 15  
Black 15



A preventivo  
Upon request

## • TESSUTO ECOLOGICO / ECOLOGICAL FABRIC

COMPOSIZIONE / COMPOSITION  
100% polyester

CARATTERISTICHE / CHARACTERISTICS  
Bielastico, ecosostenibile / Bi-elastic, eco-friendly

DURABILITÀ / DURABILITY  
85.000 Martindale



Panna 05  
Cream 05



Ècru 03  
Ècru 03



Grigio chiaro 07  
Light grey 07



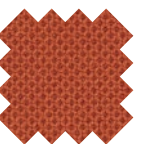
Grigio medio 09  
Medium grey 09



Grigio scuro 11  
Dark grey 11



Rosso 19  
Red 19



Ruggine 35  
Rust 35



Nero 15  
Black 15



A preventivo  
Upon request

## • TREVIRA

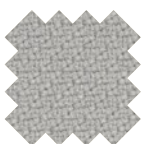
COMPOSIZIONE / COMPOSITION  
100% Trevira

CARATTERISTICHE / CHARACTERISTICS  
Ecosostenibile / Eco-friendly

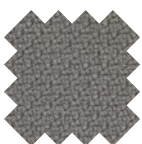
DURABILITÀ / DURABILITY  
100.000 Martindale



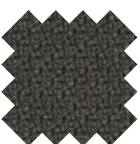
Ècru 03  
Ècru 03



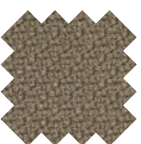
Grigio chiaro 07  
Light grey 07



Grigio medio 09  
Medium grey 09



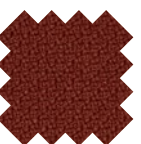
Grigio scuro 11  
Dark grey 11



Fango 23  
Mud 23



Rosso 19  
Red 19



Ruggine 35  
Rust 35



Nero 15  
Black 15



A preventivo  
Upon request

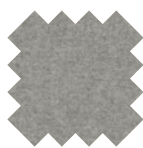
## CATEGORIA C / CATEGORY C

### • DIVINA MELANGE 3

COMPOSIZIONE / COMPOSITION  
100% new wool

CARATTERISTICHE / CHARACTERISTICS  
Ecosostenibile / Eco-friendly

DURABILITÀ / DURABILITY  
45.000 Martindale



Grigio chiaro 07  
Light grey 07



Grigio medio 09  
Medium grey 09



Grigio scuro 11  
Dark grey 11



Marrone 25  
Brown 25



Rosso 19  
Red 19



Verde 21  
Green 21



A preventivo  
Upon request

### • DIVINA 3

COMPOSIZIONE / COMPOSITION  
100% new wool

CARATTERISTICHE / CHARACTERISTICS  
Ecosostenibile / Eco-friendly

DURABILITÀ / DURABILITY  
45.000 Martindale



Bianco 01  
White 01



Grigio chiaro 07  
Light grey 07



Grigio scuro 11  
Dark grey 11



Fango 23  
Mud 23



Rosso 19  
Red 19



Ruggine 35  
Rust 35



Nero 15  
Black 15



A preventivo  
Upon request

### • PELLICCIA ECOLOGICA / FAUX FUR

COMPOSIZIONE / COMPOSITION  
100% polyester

CARATTERISTICHE / CHARACTERISTICS  
Pelo corto / Short hair

DURABILITÀ / DURABILITY  
50.000 Martindale



Bianco 01  
White 01



Rosa 39  
Pink 39



Nero 15  
Black 15



A preventivo  
Upon request

## CATEGORIA D / CATEGORY D

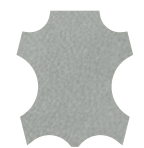
### • PELLE VINTAGE / VINTAGE LEATHER

COMPOSIZIONE / COMPOSITION  
Concia all'anilina / Aniline tanning

CARATTERISTICHE / CHARACTERISTICS  
Effetto invecchiato / Distressed vintage effect



Ècru 03  
Ècru 03



Grigio chiaro 07  
Light grey 07



Grigio medio 09  
Medium grey 09



Grigio scuro 11  
Dark grey 11



Biscotto 27  
Biscuit 27



Cioccolato 31  
Chocolate 31



Carbone 29  
Carbon 29



Verde 21  
Green 21

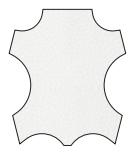


A preventivo  
Upon request

### • PELLE / LEATHER

COMPOSIZIONE / COMPOSITION  
Concia al cromo / Chrome tanning

CARATTERISTICHE / CHARACTERISTICS  
Mezzo fiore / Lightly buffed natural grain



Bianco 01  
White 01



Ècru 03  
Ècru 03



Rosso 19  
Red 19



Marrone 25  
Brown 25



Nero 15  
Black 15



A preventivo  
Upon request