



plana

DESIGN
STUDIO KLASS

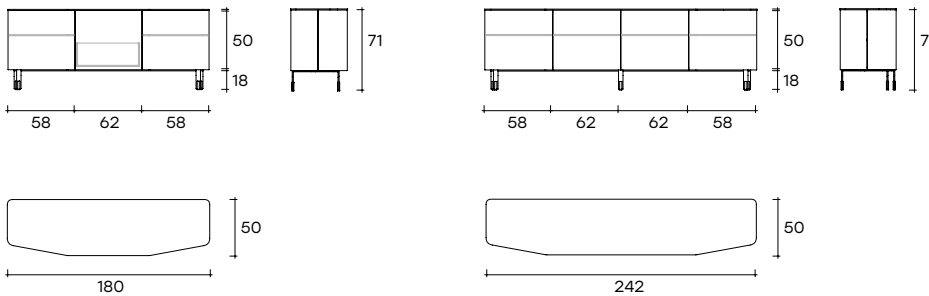
modello registrato
registered model



Madia con struttura in legno laccato "Grigio Lava", ante in vetro extralight acidato da 6 mm curvato e retroverniciato con tinte speciali effetto materico, piano in vetro extralight da 10 mm retroverniciato.

Cupboard with "Lava Grey" lacquered wood structure, doors in 6 mm curved extralight acid-etched glass, back-lacquered with special finish, textured effect. Top in 10 mm back-lacquered extralight glass.

portata sul piano: 30 kg
load capacity on top: 30 kg



dimensioni L, P, H
dimensions L, W, H
(cm)

	COD./CODE	L	P/W	H	peso netto net weight (kg)	peso lordo gross weight (kg)	volume imballo package volume (m ³)
Madia con 2 ante laterali e cassettoni centrale. Cupboard with 2 side doors and a central drawer.	PL180-...	180	50	71	115	165	1,23
Madia con 4 ante. Cupboard with 4 doors.	PL242-...	180	50	71	115	165	1,23

FINITURA PIANO FINISH TOP	FINITURA ANTE DOORS FINISH	CODICE FINITURA FINISH CODE
TINTA CAT.1 TINTA UNITA COLOR CAT.1 PLAN COLOR	TINTA CAT.3 TINTA SPECIALE EFFETTO MATERICO COLOR CAT.3 SPECIAL COLOR WITH TEXTURED EFFECT	
Marrone-Grey Grey-brown	Marrone nuvolato Cloudy brown	MG/MN
Grigio Olivo Olive Grey	Ottone Brunito Burnished brass	OL/OB
Grigio Tempesta Storm Grey	Piombo Satinato Glazed lead	TE/PS

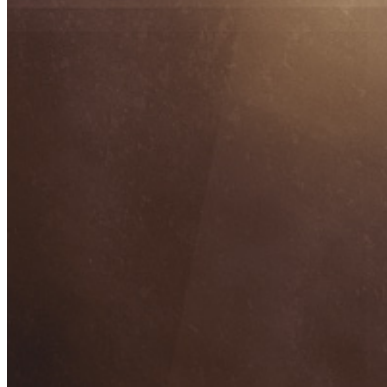


**FINITURE
FINISHES**

**Ante in vetro extralight acidato retroverniciato
Back-painted acid-etched extralight doors**



ottone brunito
burnished brass

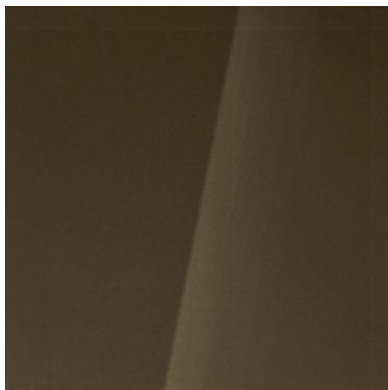


marrone nuvolato
cloudy brown

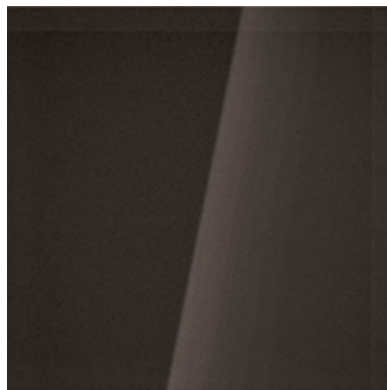


piombo satinato
glazed lead

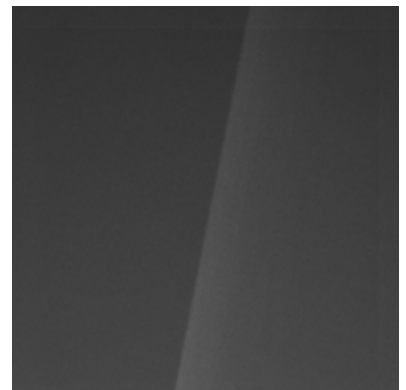
**Piano in vetro extralight retroverniciato
Back-painted extralight glass top**



grigio olivo
olive grey



marrone-grey
brown-grey



grigio tempesta
storm grey