

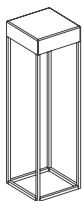
Chia

Design: Gino Carollo



Lampada da tavolo ricaricabile con tecnologia LED e autonomia fino a 15 ore di utilizzo. Disegnata e prodotta totalmente in Italia. Tre intensità di luce più una di cortesia. Utilizzabile anche in ambienti esterni riparati. Funzioni speciali: indicatore del livello di carica; segnalazione luminosa a carica completa; luce di emergenza; funzionamento in collegamento alla corrente. Disponibile in tutte le finiture Ronda Design. Rechargeable table lamp with LED technology and runtime up to 15 hours of use. Designed and produced entirely in Italy. Three intensities of light plus one of courtesy. Can also be used in sheltered outdoor environments. Special functions: charge level indicator; full charge light signal; emergency light; operation in connection with power supply. Available in all Ronda Design finishes.

Dimensioni Dimensions



L 110 H 368 P 110 mm
Peso / Height 1 kg



rechargeable
batteria al litio removibile
removable lithium battery
5500 MA/h - 3,7 V



battery charger
carica batteria incluso
battery charger included



runtime
fino a 15 ore di autonomia
up to 15 hours of runtime



4 light intensity
3+1 intensità di luce
3+1 intensities of light
max 3,6 W - 410 lm



technology
luce calda
warm light
3000 K - A++



made in Italy
Disegnata e prodotta in Italia
Designed and produced in Italy



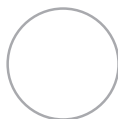
CE certificate
Certificato europeo
European certificate



IP33 certificate
Grado di protezione
Degree of protection

Finiture Finishings

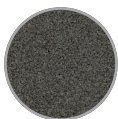
P - Finiture a polveri / Powder coated finishes



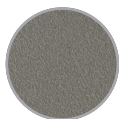
Bianco
White



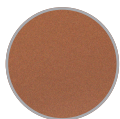
Nero
Black



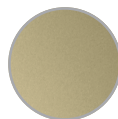
Grafite
Graphite



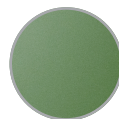
Titanio
Titanium



Rame
Copper



Ottone
Brass



Verde
Green

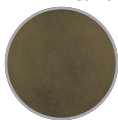


Azzurro
Light Blue

B - Finiture brunite / Aged finishes



Tortora
Taupe



Peltro
Pewter



Bronzo
Bronze



Rame
Copper