

MIDJ
in Italy

Alfred

design Midj R&D, 2017

Tavolo allungabile con base a slitta in acciaio verniciato. Top in cristallo antigraffio o cristalceramica.



Finiture e materiali

Base



Acciaio Corda

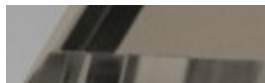


Acciaio Grafite



Acciaio Marrone

Piano



Cristallo Satinato Antigraffio
Corda



Cristallo Satinato Antigraffio
Grafite



Cristalceramica Piombo



Cristalceramica Savoia
Cemento

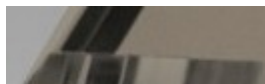


Cristalceramica Marmo
Emperador



Cristalceramica Oxide Corda

Allunghe



Cristallo Satinato Antigraffio
Corda



Cristallo Satinato Antigraffio
Grafite



Cristalceramica Piombo



Cristalceramica Savoia
Cemento

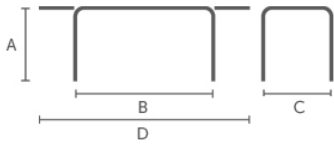


Cristalceramica Marmo
Emperador



Cristalceramica Oxide Corda

Dimensioni



Dati volumetrici

Peso 153

Volume 0.68 mc

Colli 5

Dimensione	A	B	C	D
	(cm)	(cm)	(cm)	(cm)
	(inch)	(inch)	(inch)	(inch)
160x90	75	160	240	90
	(29.5)	(63)	(94.5)	(35.4)
200x100	75	200	300	100
	(29.5)	(78.7)	(118.1)	(39.4)

Gallery

